
TECHNICAL MANUAL

ILLUSTRATED PARTS BREAKDOWN

**CABINETS, ELECTRICAL EQUIPMENT
PART NOS. EC-2456, EC-2457 AND EC-2460**

This manual contains material reproduced by permission of GTE/IS. Use, duplication, or disclosure for use outside the Government is not authorized.

HEADQUARTERS, DEPARTMENT OF THE ARMY

NOVEMBER 1979

HEADQUARTERS
DEPARTMENT OF THE ARMY
Washington, DC, 30 November

TM 11-7010-200-34P-10-2, 30 November 1979, is published for the use of all concerned. This manual is a reprint of TO 31S5-4-521-34, 17 March 1978.

By Order of the Secretary of the Army

E. C. MEYER
General, United States Army
Chief of Staff

Official:

J. C. PENNINGTON
Major General, United States Army
The Adjutant General

DISTRIBUTION:

Active Army

TSG (1)
USAARENBD (1)
USAINSCOM (2)
TRADOC (2)
DARCOM (1)
TECOM (1)
OS Maj Comd (2)
USACC (2)
HISA (Ft Monmouth (21)
Armies (1)
USASIGS (10)
Svc Colleges (1)
WSMR (1)
USAERDAA (1)
USAERDAW (1)
Ft Richardson (CERCOM Ofc) (1)
Ft Carson (5)
Ft Gillem (5)

Army Dep (1) except
LRAD (10)
SAAD (10)
TOAD (14)
SHAD (3)
USA Dep (1)
Sig Sec USA Dep (1)
Units org under fol TOE:
29-134 (1)
29-136 (1)
29-207 (2)
29-610 (2)
Acct # M0497 (2)
" # D0741 (1)
" # H0534 (1)
" # A0049 (1)
" # S0392 (3)
" # J0861 (10)
" # C0214 (2)

NG: NONE

USAR: NONE

For explanation of abbreviations see, AR 310-50.

CABINETS, ELECTRICAL EQUIPMENT

ILLUSTRATION BREAKDOWN

SECTION I

INTRODUCTION

1-1 GENERAL. This Illustrated Parts Breakdown (IPB) Technical Manual (TM) lists and describes the items necessary for the support of Cabinets, Electronic Equipment, EC-2456, EC-2457, and EC-2460, separate individual assemblies used in conjunction with one or more Automated Communication Terminal configurations of the General Communications Network. The manual is divided into three sections: Section I, Introduction; Section II, Group Assembly Parts List (GAPL); and Section III, Numerical Index. It is used for requisitioning, storing, issuing and identifying parts. It is also used to illustrate assembly and disassembly relationships.

1-2 SCOPE. This IPB TM reflects the listing of repair parts and/or assemblies.

1-3 GROUP ASSEMBLY PARTS LIST. This section contains the complete group assembly parts list separated into figures by main groups, or assemblies, and keyed to the associated illustration by figure and index numbers. The GAPL listing is arranged in eight columns: Figure and Index Number; Reference Designation Column; Locator Column; Description of Item; Part Number; (Manufacture's) Code Identification Number; Units per Assembly; and Usable on Code Column.

1-3.1 FIGURE AND INDEX NUMBER COLUMNS This first item in the figure and index number column is the figure number of the illustration of the assembly listed. The figure number is not repeated thereafter except with the first item of listings continued on succeeding pages. The second number is the index number to key the part to the illustration callout. Identical parts occurring in the same general location on the equipment are illustrated and indexed but once. The relation of each part to its Next Higher Assembly (NHA) or main group is shown by indentation.

1-3.2 REFERENCE DESIGNATION COLUMN. These assemblies being mechanical in nature will not contain reference designators.

1-3.3 LOCATOR COLUMN. Not Used.

1-3.4 DESCRIPTION COLUMN. a. The names used are the same as those assigned on the manufacturing drawings or in the Defense Supply Agency Cataloging Handbook H6. Attaching parts are listed immediately below the items to which they attach. The relation of each part to its next higher assembly is shown by indentation.

1-3.4.1 INDENTATION. Parts listed are indented to indicate item relationship or NHA. The nomenclature of each assembly is followed in the list (except for attaching parts) by the nomenclature of its components indented one column to the right. This indentation indicates the relationship of the component to the assembly. To determine the next higher assembly of a part or assembly, note the column in which the first word of the nomenclature appears. The first item directly above, which appears one column to the left, is the NHA (except for attaching parts).

1-3.5 PART NUMBER COLUMN. **Part Numbers used in this column are selected according to the following order of preference: military standards, vendor numbers and design activity numbers. When a vendor's number is used and an alternative source is known, the alternative vendor and part number is also listed.**

1-3.6 CODE IDENTIFICATION COLUMN. **The codes listed in this column comprise a five-digit code for the actual manufacturer. This is obtained in accordance with the Federal Supply Code for Manufacturer's Cataloging Handbooks H4-1 and H4-2 and any amendments thereto. Where a coded identification number is not entered, the individual items responsibility remains that of prime contractor 52483, GTE Information Systems. An alphanumerical listing of the applicable manufacturer's codes for this IPB technical manual is included at the end of SECTION I, SEE TABLE 1-1.**

1-3.7 Units Per Assembly Column. The Quantity shown in this column represents the units required for one next higher assembly or subassembly.

1-3.8 Usable On Code Column. Usable On Codes shall be employed to indicate specific usability items. The absence of a code indicates that this part is used in all models or revisions covered by this technical manual.

1-4 NUMERICAL INDEX. This section contains an alphanumeric listing of all parts that comprise the article.

1-4.1 Part Number Column. The order of precedence in beginning the part number arrangement on first (left-hand) position of the part number is as follows:

Letters A through Z

Numerals 0 through 9

The second and succeeding positions of the part number from left to right are as follows:

- a. Space (blank column)
- b. Diagonal (slant)
- c. Point (period)
- d. Dash (-)
- e. Letters A through Z

Numerals 0 through 9

"No Number" and "Commercial Parts" are listed in alphabetical sequence by the identifying noun in the part number column.

1-4.1 FIGURE AND INDEX NUMBER COLUMNS. The entries in this column provide a cross-reference by means of figure and index numbers to the listing of the part number in Section II (CAPL). The figure and index numbers listed show the first appearance only of each part within each figure in Section II.

1-4.3 QUANTITY PER ARTICLE. The quantity shown in this column is the total quantity required for each article.

1-4.4 SOURCE CODE COLUMN. Source Codes are entered in the first and second positions of the uniform format and indicate to maintenance and supply personnel the source of acquisition for the item for replacement purposes, i.e., procured, stocked, manufactured, or assembled. Source Codes, when and if assigned, are Source, Maintenance and Recoverability Codes assigned in accordance with NAVAIR INST 4423.2.

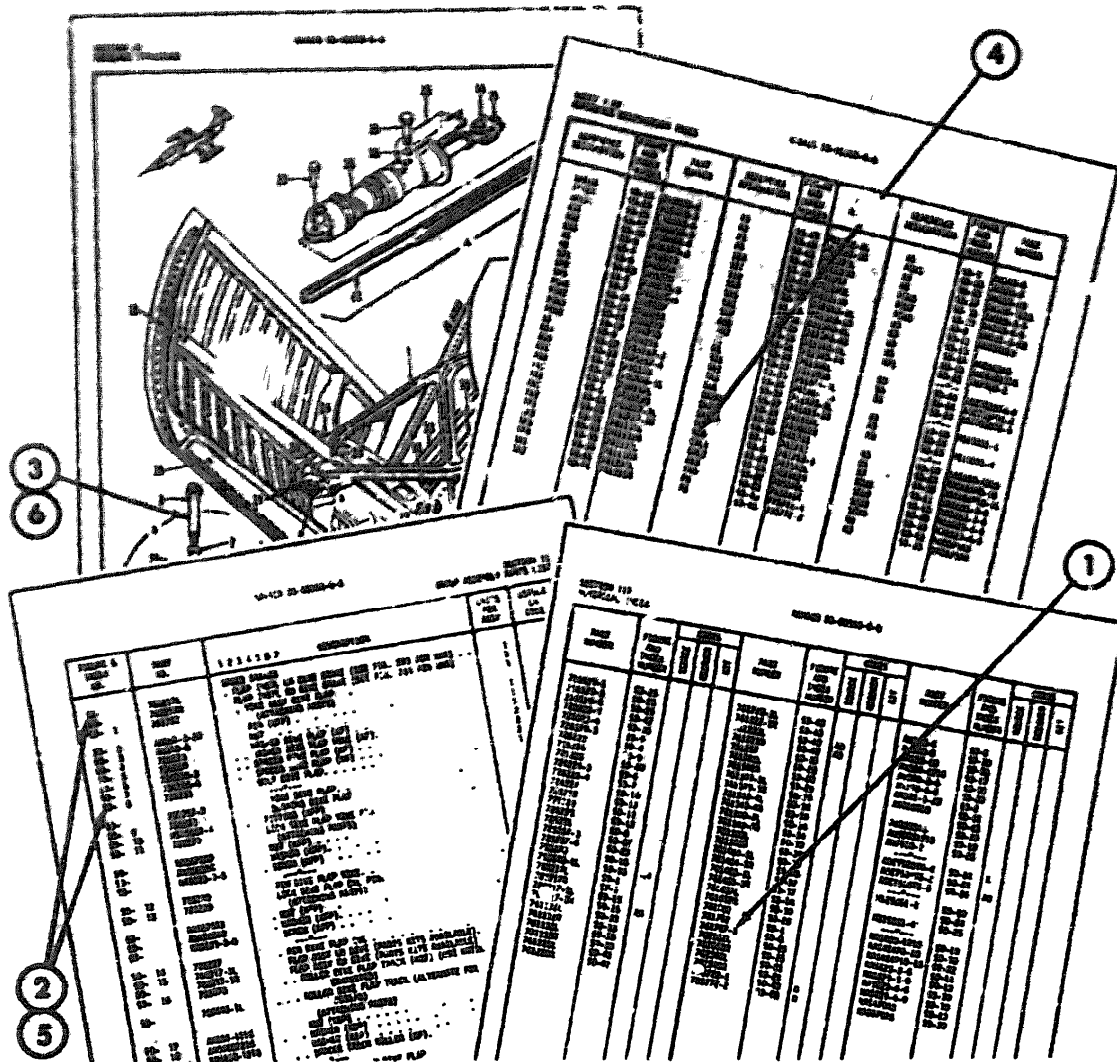
1-4.5 REPAIR CODE COLUMN. The use of this column shall remain at the discretion of the prime contractor.

1-5 REFERENCE DESIGNATION INDEX. Due to the mechanical nature of this equipment, the Reference Designation Index is not applicable.

1-6 ABBREVIATIONS. Abbreviations used in this manual are in accordance with MIL-STD-12C.

1-7 HOW TO USE THE ILLUSTRATED PARTS BREAKDOWN. (See following page.)

HOW TO USE THE ILLUSTRATED PARTS BREAKDOWN



WHEN THE PART NUMBER OR REFERENCE DESIGNATION IS KNOWN

- | | |
|---|--|
| <p>1 When the part number is known, refer to Section III, Numerical Index. Locate the part number and note the figure and index number assigned to the part number.</p> <p>2 Turn to the figure number indicated and locate the index number referenced in the Numerical Index.</p> <p>3 If a pictorial representation of the part, or its location is desired, refer to the same index number on the accompanying illustration.</p> | <p>4 When the reference designation is known, refer to Section IV, Reference Designation Index. Locate the reference designation and note the figure and index number and the part number assigned.</p> <p>5 Turn to the figure indicated and locate the index number referenced in the Reference Designation Index.</p> <p>6 If a pictorial representation of the part, or its location is desired, refer to the same index number on the accompanying illustration.</p> |
|---|--|

TABLE 1-1
MANUFACTURER'S CODE LIST

CODE	MANUFACTURERS NAME AND ADDRESS
06229	Electrovert, Inc. 86 Hartford Ave. Mount Vernon, NY 10553
25795	Grainger, W.W., Inc. 5959 W. Howard St. Chicago, IL 60648
27182	Hansen, A.L., Co. 2155 Delaney Rd. Gurnee, IL 60031
32284	Rotron Controls Division of Rotron, Inc. 7-9 Hasbrouck Lane Woodstock, NY 12498
32360	Enclosure Corp. 4529 Adams Circle Cornwells Hts, PA 19020
34318	Radcon Corp. 246 Columbus Ave. Roselle, NJ 07203
41326	General Electric Co, Wiring Device Business Dept. P.O. Box 6606, 95 Hathaway Providence, RI 02904
76381	Minnesota Mining and Mfg. Co. 3M Center St. Paul, MN 55101
78189	Illinois Tool Works, Inc., Shakeproof Div. St. Charles Rd. Elgin, IL 60120
78553	Eaton Corp, Engineered Fastener Div., Tinnerman Plant P.O. Box 6688 8700 Brookpark Rd. Cleveland, OH 44101
82240	Simmons Fastener Corp. 1761 N. Broadway Albany, NY 12204

FORM-68-016

MANUFACTURERS' CODE LIST

CODE	MANUFACTURERS NAME AND ADDRESS
82866	Research Products Corp. 1015 E. Washington Ave. Madison, WI 53701
82877	Rotron Inc. 7-9 Hasbrouck Lane Woodstock, NY 12498
94222	Southeo, Inc. Lester, PA 19113
96195	Unistrut Corp. 4118 S. Wayne Wayne, MI 48184
96906	Military Standards or Promulgated by Military Departments Under Authority of Defense Standardization Manual 4120 3-M

SECTION II
GROUP ASSEMBLY PARTS LIST



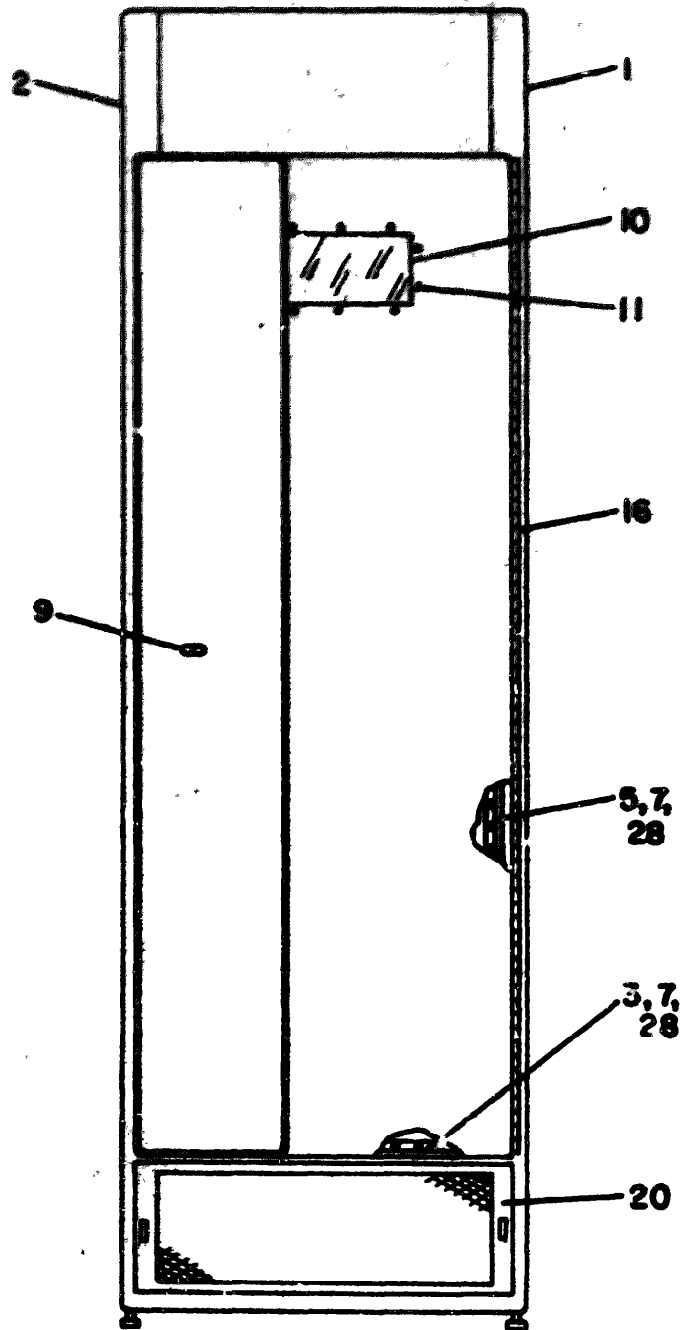


Figure 1. Cabinet, Electrical Equipment (EC-2466 and EC-2457) (Sheet 1 of 2).

GROUP ASSEMBLY PARTS LIST

Figure Index No.	Ref. Des.	Locator	Description	Part Number .	Code Ident	Units Per Assy	Usable on Code
			CABINET ELECTRICAL EQUIPMENT, EMI SHIELDED, 25-1/2 w. X 78-19/32 h. X 31 in. d. WITH VIEWING WINDOW.	EC-2456		1	A
			CABINET, ELECTRICAL EQUIPMENT, EMI SHIELDED, 25-1/2 w. X 78-19/32 h. X 31 in. d.	EC-2457		1	B
-1			. PANEL, RIGHT SIDE, 2 w. X 78-19/32 h X 31 in. d. WITH INTEGRAL LATCHES.. .	EC-2470-1		1	
-2			. PANEL, LEFT SIDE, 2 w. X 78-19/32 h X 31 in. d. WITH INTEGRAL LATCHES.. .	EC-2470-2		1	
-3			. RETAINER, BAR, EMI GASKET, 1Ø AWG STEEL, 5/8 w. X 21 in. lg.	EC-2657-21½		4	
-4			. RETAINER, BAR, EMI GASKET, 1Ø AWG STEEL, 5/8 w. X 30 in. lg.	EC-2657-30		4	
-5			. RETAINER, BAR, EMI GASKET, 1Ø AWG STEEL, 5/8 w. X 56 in. lg.	EC-2657-56		4	
-6			. RETAINER, BAR, EMI GASKET, 1Ø AWG STEEL, 5/8 w. X 78 in. lg.	EC2657-78½		4	
-7			. GASKET, EMI, FERROUS WITH RUBBER CORE	1512-00023-10	34318	44FT	
-8			. GASKET, EMI, FERROUS AND RUBBER DRY BACK. . .	1518-12025-10	34318	9FT	
-9			. LATCH ASSEMBLY, 3 HOOK ROTARY DRAW CATCH. . . .	EC-2658		2	
-10			. WINDOW, OBSERVATION, EMI DOUBLE SHIELDED, 4 h. X 6 in. w.	3510-00042-32	34318	1	A

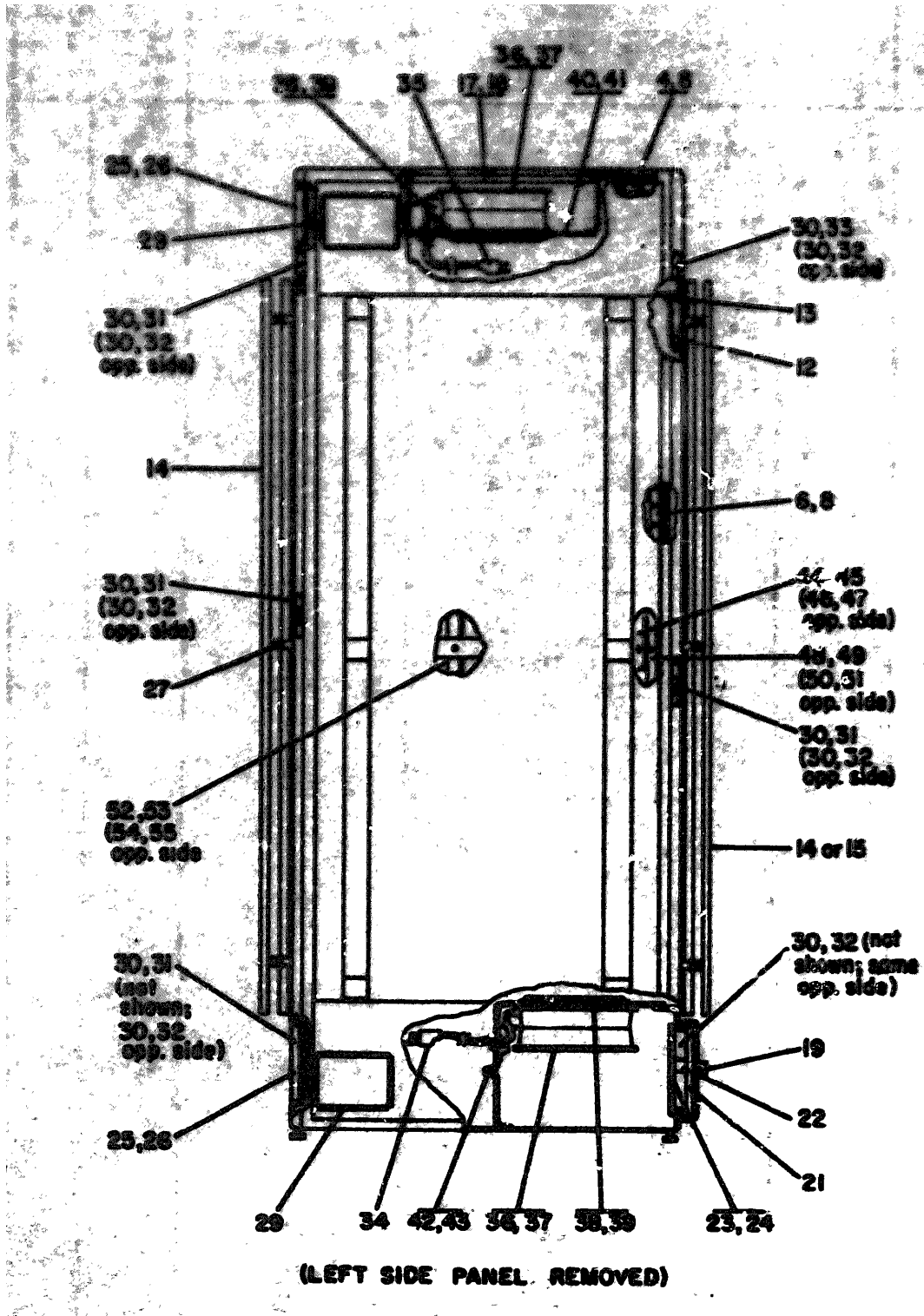


Figure 1. Cabinet, Electrical Equipment (EC-2456 and EC-2457) (Sheet 2 of 3).

GROUP ASSEMBLY PARTS LIST

Figure Index No.	Ref. Des.	Locator	Description	Part Number	Code Ident	Units Per Assy	Usable on Code
1-			(ATTACHING PARTS)				
-11			. SCREW, MACHINE.	MS51957-45	96986	18	A
			. NUT-WASHER ASSEMBLY, 6-32 THD.	S11-081800-00	78189	10	A
-12			. SASH CHAIN ASSEMBLY, NO. 3 COPPER DIPPED CHAIN 18 in. lg. WITH 2, EACH 3/8 in. O.D. X 1-1/2 in. lg. CLEAR POLYETHYLENE HEAT SHRINK TUBES. . . .	EC-2663-18		2	
-13			(ATTACHING PARTS)				
			. SCREW, MACHINE.	MS51957-45	96986	4	
-14			. DOOR, CABINET, 16 AWG STEEL WITH 12 AWG FOLD BACK HANDLE, 23-1/8 w. X 58 in. h.	EC-2459		1	A
			. DOOR, CABINET, 16 AWG STEEL WITH 12 AWG FOLD BACK HANDLE, 23-1/8 w. X 58 in. h.	EC-2459		2	B
-15			. DOOR, CABINET, 16 AWG STEEL WITH 12 AWG FOLD BACK HANDLE, 23-1/8 w. X 58 in. h. WITH OBSERVA- TION WINDOW	EC-2652		1	A
-16			(ATTACHING PARTS)				
			. SCREW, TAPPING.	MS24630-67	96986	18	A
			. NUT-WASHER ASSEMBLY, 10-32 THD.	511-101800-50	78189	18	
-17			. FILTER, AIR, EMI HONEY- COMB, 15 X 15 in.	3032-51515-32	34318	1	
-18			(ATTACHING PARTS)				
			. SCREW, MACHINE.	MS51957-46	96986	20	
-19			. LATCH, SWELL, BLACK NYLON.	19-10-081-10	94222	2	

GROUP ASSEMBLY PARTS LIST

Figure & Inden. No.	Ref. Des.	Locator	Description	Part Number	Code Ident	Units Per Assy	Used on Cod
1-							
-20			. GRILLE, METAL, 16 ANG STEEL, 8-1/2 h. X 23-1/8 in. w.	EC-2653		1	
-21			. FILTER ELEMENT, AIR ALUM- INUM FILTER MEDIA, 6-3/4 X 21 X 7/16 in.	MF12KLIKX 6-3/4 X21K7/16	82866	1	
-22			. BRACKET, GRILLE MOUNTING	EC-2654		2	
-23			. FILTER, AIR, EMI HONEY- COMB 6 X 20-3/32 in. . . .	3032-5062-32	34318	1	
			(ATTACHING PARTS)				
-24			. SCREW, MACHINE.	MS51957-46	96906	18	
-25			. PANEL, BLANK, CONNECTOR 7 h. X 20 in. w.	EC-2515-18		2	
			(ATTACHING PARTS)				
-26			. SCREW, MACHINE.	MS51958-68	96906	32	
-27			. FORK, LATCHING (MODIFIED REXWOOD P/N 61114-2-1AC)	EC-2655		6	
-28			. TAPE, CONDUCTING COPPER FOIL BACKED, 3/4 in. w.	I-1181-3/4	76381	119F2	
-29			. GROMMET, PLASTIC	CS4-CP	06229	A/R	
-30			. CATCH, ROTARY.	ROTOLOCK1	82240	6	
			(ATTACHING PARTS)				
-31			. SCREW, MACHINE.	MS24693-272	96906	8	
-32			. SCREW, MACHINE.	MS51958-61	96906	38	
-33			. SCREW, MACHINE.	MS51958-63	96906	2	
			(ATTACHING PARTS)				
-34			. CABLE ASSEMBLY, POWER 4 FT LONG WITH 3 PRONG GROUNDING PLUG, 7 AMP AT 115V	2W050-4FT	25795	1	

GROUP ASSEMBLY PARTS LIST

Figure Index No.	Ref. Des.	Locator	Description	Part Number	Code Ident	Units Per Assy	Usable on Code
1- -35			. CABLE ASSEMBLY, POWER, 8 FT LONG WITH 3 PHASE GROUNDING PLUG, 7 AMP AT 115V.	27950-8FT	25795	1	
-36			. FAN, TUBAXIAL, 115V, 60 HZ, 61 WATTS, 590 CFM, 18 dia. X 3.5 in. d.	820186	22877	2	
			(ATTACHING PARTS)				
-37			. SCREW, MACHINE.	MS51957-45	96906	8	
			. NUT-WASHER ASSEMBLY, 8-32 THD.	511-081800-00	78189	8	

-38			. GUARD, FINGER, BRIGHT ZINC FINISHED STEEL WIRE, 9.688 dia.	476323	32284	2	
			(ATTACHING PARTS)				
-39			. SCREW, MACHINE.	MS51957-45	96906	8	
			. NUT-WASHER ASSEMBLY, 8-32 THD.	511-081800-00	78189	8	

-40			. PANEL, FAN MOUNTING 14.75 X 14.75 in.	EC-2515-9		1	
			(ATTACHING PARTS)				
-41			. SCREW, TAPPING.	MS24638-35	96906	8	
			. NUT, SHEET SPRING, NO. 10 THD.	C1432-102-24	78553	8	
			888+-----				
-42			. PANEL, FAN MOUNTING 14.75 X 14.75 X 6.25 in.	EC-2515-10		1	
			(ATTACHING PARTS)				
-43			. SCREW, TAPPING.	MS24638-35	96906	6	
			. NUT, SHEET SPRING, NO. 10 THD.	C1432-102-24	78553	6	

-44			. BRACKET, ANGLE, 10 ANG STEEL, ZINC PLATE AND YELLOW IRIDITE, 1-3/8 d. X 1-13/16 w. X 29-3/4 in. lg.	EC-2482-TRH		1	A

US012A, 12-72

GROUP ASSEMBLY PARTS LIST

Figure & Index No.	Ref. Des.	Locator	Description	Part Number	Code Ident	Units Per Assy	Use on Code
1- -44			. BRACKET, ANGLE, 10 AWG STEEL, ZINC PLATE AND YELLOW IRIDITE, 1-3/8 d. X 1-13/16 w. X 29-3/4 in. lg. (QUANTITY AND LOCATION DETERMINED BY EQUIPMENT TO BE MOUNTED). . .	EC-2482-TLH		42	B
			(ATTACHING PARTS)				
-45			. SCREW, HEX-WASHER HEAD, 1/4-20 X 3/4 in. lg. . .	1/4-20X3/4	96195	2	
			. NUT, CHANNEL WITH SPRING 1/4-20 THD.	P4006-1420	96195	2	
-46			. BRACKET, ANGLE, 10 AWG STEEL, ZINC PLATE AND YELLOW IRIDITE, 1-3/8 d. X 3-61/64 w. X 29-3/4 in. lg.	EC-2482-TLH		1	A
			. BRACKET, ANGLE, 10 AWG STEEL, ZINC PLATE AND YELLOW IRIDITE, 1-3/8 d. X 3-61/64 w. X 29-3/4 in. lg. (QUANTITY AND LOCATION DETERMINED BY EQUIPMENT TO BE MOUNTED). . .	EC-2482-TLH		42	B
			(ATTACHING PARTS)				
-47			. SCREW, HEX-WASHER HEAD, 1/4-20 X 3/4 in. lg. . .	1/4-20X3/4	96195	2	
			. NUT, CHANNEL WITH SPRING 1/4-20 THD.	P4006-1420	96195	2	
-48			. BRACKET, ANGLE, 10 AWG STEEL, ZINC PLATE AND YELLOW IRIDITE, 1-3/8 d. X 1-13/16 w. X 29-3/4 in. lg.	EC-2482-BRH		1	A
			. BRACKET, ANGLE, 10 AWG STEEL, ZINC PLATE AND YELLOW IRIDITE, 1-3/8 d. X 1-13/16 w. X 29-3/4 in. lg. (QUANTITY AND LOCA-				

FORM 13-72

FORM-98-020

GROUP ASSEMBLY PARTS LIST

Figure Index No.	Ref. Des.	Locator	Description	Part Number	Code Ident	Units Per Assy	Usable on Code
			TION DETERMINED BY EQUIPMENT TO BE MOUNTED). . .	10-2681-324		AR	B
			(ATTACHING PARTS)				
-49			. SCREW, HEX-WASHER HEAD, 1/4-20 X 3/4 in. lg. . .	1/4-10X3-4	96195	2	
			. NUT, CHANNEL WITH SPRING 1/4-20 THD.	P6996-1620	96195	2	

-50			. BRACKET, ANGLE, 10 ANG STEEL, ZINC PLATE AND YELLOW IRIDIYE, 1-3/8 d. X 3-61/64 w. X 29-3/4 in. lg.	MC-2682-315		1	A
			. BRACKET, ANGLE, 10 ANG STEEL, ZINC PLATE AND YELLOW IRIDIYE, 1-3/8 d. X 3-61/64 w. X 29-3/4 in. lg (QUANTITY AND LOCATION DETERMINED BY EQUIPMENT TO BE MOUNTED). . .	EC-2482-BLE		AR	B
			(ATTACHING PARTS)				
-51			. SCREW, HEX-WASHER HEAD 1/4-20 X 3/4 in. lg. . .	1/4-20X3/4	96195	2	
			. NUT, CHANNEL WITH SPRING 1/4-20 THD.	P4966-1420	96195	2	

-52			. BRACKET, ANGLE, 10 ANG STEEL, ZINC PLATE AND YELLOW IRIDIYE, 1-3/8 d. X 1-13/16 w. X 56 in. lg.	BC-2656RH		AR	B
			. BRACKET, ANGLE, 10 ANG STEEL, ZINC PLATE AND YELLOW IRIDIYE, 1-3/8 d. X 1-13/16 w. X 56 in. lg. (QUANTITY AND LOCATION DETERMINED BY EQUIPMENT TO BE MOUNTED)...	EC-2656RH		AR	B
			(ATTACHING PARTS)				
-53			. SCREW, HEX-WASHER HEAD, 1/4-20 X 3/4 in. lg. . .	1/4-20X3/4	96195	3	

GROUP ASSEMBLY PARTS LIST

Figure & Section No.	Ref. Desc.	Locator	Description	Part Number	Code Ident.	Units Per Assy	Use of Code
1-			1/4-20 THD.	MS86-1420	96195	3	
-54			BRACKET, ANGLE, 19 AWG STEEL, ZINC PLATE AND YELLOW IRIDIUM, 1-3/8 d. X 3-61/64 w. X 56 in. lg.	BC-2656LH		1	
			BRACKET, ANGLE, 19 AWG STEEL, ZINC PLATE AND YELLOW IRIDIUM, 1-3/8 d. X 3-61/64 w. X 56 in. lg. (QUANTITY AND LOCATION DETERMINED BY EQUIPMENT TO BE MOUNTED).	BC-2656LH		AS	
-55			(ATTACHING PARTS)				
			SCREW, HEX-WASHER HEAD 1/4-20 X 3/4 in. lg.	1/4-20X3/4	96195	3	
			NUT, CHANNEL WITH SPRING 1/4-20 THD.	P4006-1420	96195	3	

NSA, 12-72

FORM-88-020

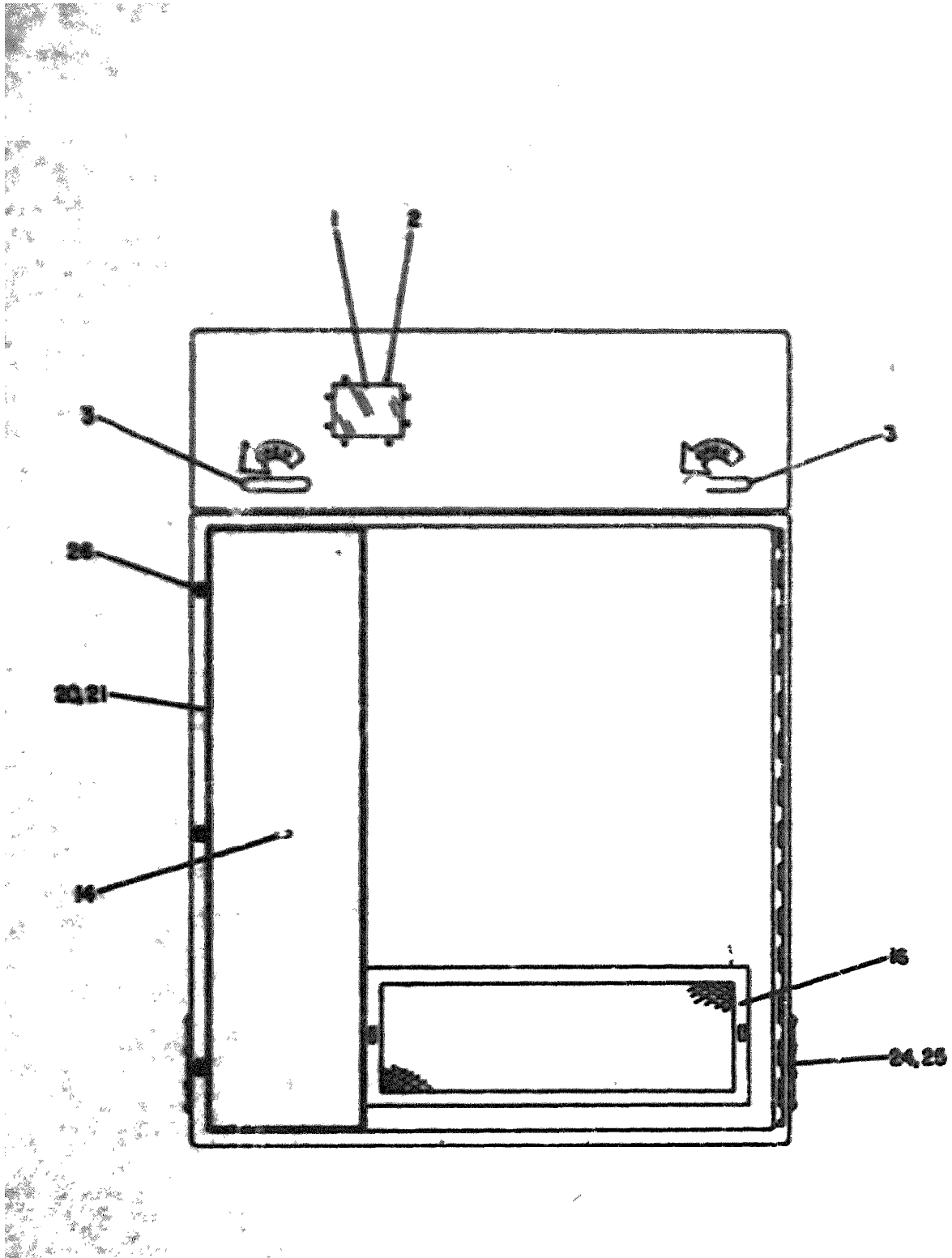


Figure 2. Cabinet, Electrical Equipment (EC-2460) (Sheet 1 of 2).

GROUP ASSEMBLY PARTS LIST

Item Group No.	Ref. Des.	Locator	Description	Part Number	Code Ident	Units Per Asy	Usable on Code
			CABINET, ELECTRICAL EQUIPMENT, EMI SHIELDED, 31-3/32 w X 44-9/16 h, X 32 in. d. WITH VIEWING WINDOW.	EC-2460		1	
-1			. WINDOW, OBSERVATION, EMI DOUBLE SHIELDED, 3 h. X 4 in w.	3510-00045-32	34318	1	
			(ATTACHING PARTS)				
-2			. SCREW, MACHINE.	MS51957-45	96906	8	
			. NUT-WASHER ASSEMBLY, 8-32 THD.	511-081800-00	78189	8	
			(ATTACHING PARTS)				
-3			. HANDLE, DOOR, TEE, CHROME FINISH.	623040-89	27182	2	
-4			. CATCE, ROTARY.	ROTOLOCK1	82240	2	
			(ATTACHING PARTS)				
-5			. SCREW, MACHINE.	MS51985-63	96906	8	
			(ATTACHING PARTS)				
-6			. SUPPORT, LID, HYDRAULIC, 21.1 in. COMPRESSED, 36.3 in. EXTENDED.	EC-2475		2	
-7			. LID, CABINET, 35-3/32 w. X 32 in. d., 16 AWG STEEL	EC-2523-7		1	
			(ATTACHING PARTS)				
-8			. SCREW, TAPPING.	MS24630-67	96906	9	
			. NUT-WASHER ASSEMBLY, 10-32 THD.	511-101800-50	78189	9	
			(ATTACHING PARTS)				
-9			. HINGE, BUTT, Ø.Ø63 AWG STEEL, 2 in. OPEN WIDTH Ø.125 in. DIA. PIN., 35 in. lg.	EC-2661		1	
			(ATTACHING PARTS)				
-10			. SCREW, TAPPING.	MS24630-67	96906	9	
			. NUT-WASHER ASSEMBLY, 10-32 THD.	511-101800	78189	9	

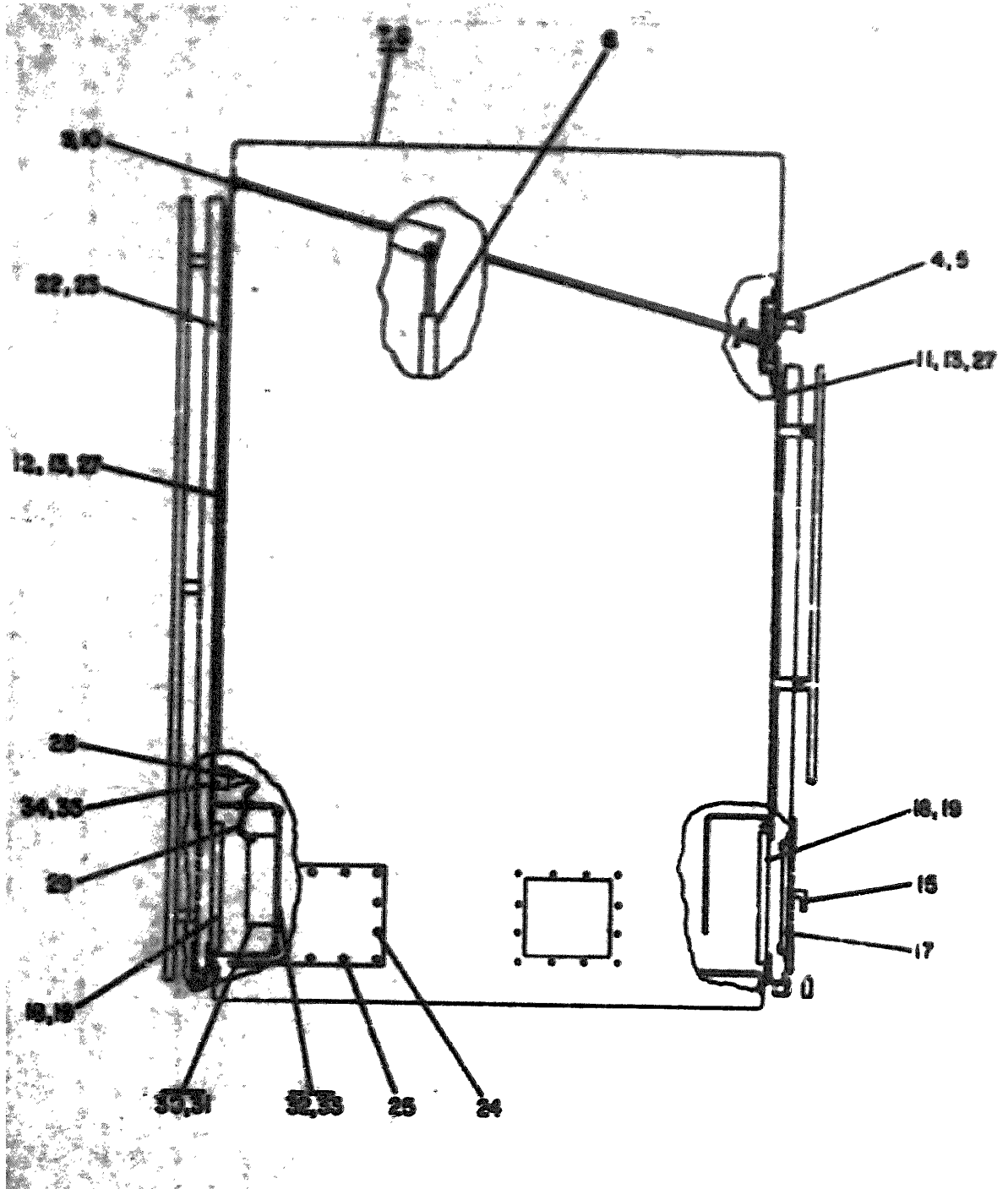


Figure 2. Cabinet, Electrical Equipment (EC-2460) (Sheet 2 of 2).

GROUP ASSEMBLY PARTS LIST

Item No.	Ref. Des.	Locator	Description	Part Number	Code Ident	Units Per Assy	Usable on Code
-11			. RETAINER, BAR, EMI CAS- KET, 16 ANG STEEL, 5/8 w. X 31 in. lg.	EC-2657-31		6	
-12			. RETAINER, BAR, EMI CAS- KET, 16 ANG STEEL, 5/8 w. X 40 in. lg.	EC-2657-40		2	
-13			. GASKET, EMI, FERROUS WITH RUBBER CORE	1512-60023-10	34318	33PT	
-14			. LATCH ASSEMBLY, 3 HOOK ROTARY DRAW CATCH.	EC-2658		2	
-15			. LATCH, SWELL, BLACK NYLON.	19-10081-10	94222	2	
-16			. GRILLE, METAL, 16 ANG STEEL, 8-1/2 h. X 23-1/8 in. w.	EC-2662		1	
-17			. FILTER ELEMENT, AIR ALUMINUM FILTER MEDIA, 6-3/4 X 20 X 7/16 in.	MVE2KLBEM6-3/4 X21X7/16	82866	1	
-18			. FILTER, AIR, EMI HONEY- COMB, 6 X 20-3/32 in.	3032-50620-32	34318	2	
-19			(ATTACHING PARTS) . SCREW, MACHINE. -----*	MS51957-46	96986	36	
-20			. DOOR, CABINET, FRONT.	EC-2659		1	
-21			(ATTACHING PARTS) . SCREW, TAPPING. NUT-WASHER ASSEMBLY, 10-52 THD. -----*	MS24630-67 511-101800-50	96986 78189	5 5	
-22			. DOOR, CABINET, REAR.	EC-2660		1	
-23			(ATTACHING PARTS) . SCREW, TAPPING. NUT-WASHER ASSEMBLY, 10-32 THD. -----*	MS24630-67 511-101800-50	96986 78189	5 5	

GROUP ASSEMBLY PARTS LIST

Figure & Index No.	Ref. Des.	Locator	Description	Part Number	Code Ident	Units Per Assy	Use on Cod
2-							
-24			. PLATE, COVER, WIRE INLET	EC-2523-6		3	
			(ATTACHING PARTS)				
-25			. SCREW, MACHINE.	MS51958-65	96906	24	
-26			. PINE, LATCHING (MODIFIED BEYOND P/N 61114-2-1AC)	EC-2655		6	
-27			. TAPE, CONDUCTING COPPER FOIL BACKED, 3/4 in. w.	E-1181-1/4	76381	80FT	
-28			. CONNECTOR PLUG, ELECTRICAL, IVORY COLOR, 3AMP AT 125V, 375 WATTS WITH 20 AWG, 10A AT 125V, 1250 WATTS WITH 18 AWG.	GR4300-2	41326	4	
-29			. CABLE ASSY, POWER 18 AWG 2 FT 1g., WITH 2 FEMALE CONTACT CONNECTORS, 300V MAX.	428056	82877	4	
-30			. FAN, VENTILATING, 115V 60HZ, 14 WATTS, 105 CFM, 4.68 SQ X 1.50 in. DEEP.	028021	82877	4	
			(ATTACHING PARTS)				
-31			. SCREW, MACHINE.	MS51957-30	96906	16	
			. NUT, PLAIN, HEX.	MS35649-244	96906	16	
-32			. PANEL, FAN MOUNTING. . .	EC-2523-27		1	
			(ATTACHING PARTS)				
-33			. SCREW, TAPPING.	MS24638-35	96906	12	
			. NUT, SHEET SPRING, NO. 10 THD.	C14342-102-24	78553	12	
-34			. CONNECTOR ASSEMBLY, ELECTRICAL, 30 in. lg., 5 EACH, 3 PRONG FEMALE CONNECTORS SPACED 6 in. ON CENTERS.	AC-30		1	

GROUP ASSEMBLY PARTS LIST

Quantity Used	Ref. Des.	Locator	Description	Part Number	Code Ident	Units Per Assy	Usable on Code
-35			(ATTACHING PARTS) • SCREW, TAPPING. -----	MS24638-23	96906	2	

SECTION III
NUMERICAL INDEX

Part Number	Stock Number	Figure & Index Number	Qty Per Art	Source Code	Repair Code
AC-30		2-34	1	XBFZZ-	
GI4342-102-24		1-41	14	PAFZZN	
		2-33	12		
EC-2456		1-	1	AFFFF-	
EC-2457		1-	1	AFFFF-	
EC-2459		1-14	2	XBFZZ-	
EC-2460		2-	1	AFFFF-	
EC-2470-1		1-1	1	XBFZZ-	
EC-2470-2		1-2	1	XBFZZ-	
EC-2475		2-6	2	XBFZZ-	
EC-2482-BLH		1-50	1	XBFZZ-	
EC-2482-BRH		1-48	1	XBFZZ-	
EC-2482-TLH		1-46	1	XBFZZ-	
EC-2482-TRH		1-44	1	XBFZZ-	
EC-2515-10		1-42	1	XBFZZ-	
EC-2515-18		1-25	2	XBFZZ-	
EC-2515-9		1-40	1	XBFZZ-	
EC-2523-27		2-32	1	XBFZZ-	
EC-2523-6		2-24	3	XBFZZ-	
EC-2523-7		2-7	1	PAFZZN	
EC-2652		1-15	1	XBFZZ-	
EC-2653		1-20	1	XBFZZ-	
EC-2654		1-22	2	XBFZZ-	
EC-2655		1-27	6	XBFZZ-	
		2-26	6	XBFZZ-	
EC-2656LH		1-54	1	XBFZZ-	
EC-2656RH		1-52	1	XBFZZ-	
EC-2657-21½		1-3	4	XBFZZ-	
EC-2657-30		1-4	4	XBFZZ-	
EC-2657-31		2-11	6	XBFZZ-	
EC-2657-40		2-12	2	XBFZZ-	
EC-2657-56		1-5	4	XBFZZ-	
EC-2657-70½		1-6	4	XBFZZ-	
EC-2658		1-9	2	XBFZZ-	
		2-14	2		
EC-2659		2-20	1	XBFZZ-	
EC-2660		2-22	1	XBFZZ-	
EC-2661		2-9	1	XBFZZ-	
EC-2662		2-16	1	XBFZZ-	
EC-2663-18		1-12	2	XBFZZ-	
GI4300-2		2-28	4	PAFZZN	
GS4-CP	5325004243616	1-29	AR	PAFZZN	

NUMERICAL INDEX

Part Number	Stock Number	Figure & Index Number	Qty Per Art	Source Code	Repair Code
MS24630-67	5305003232834	1-16	18	PAFZZN	
MS24630-23		2-8	28		
MS24630-35		2-35	2	PAFZZN	
		1-41	14	PAFZZN	
MS24693-272	5310009349748	2-33	12		
MS35649-244		1-31	8	PAFZZN	
MS51957-30	5305000546654	2-31	16	PAFZZN	
MS51957-45	5305000546670	2-31	16	PAFZZN	
		1-11	30	PAFZZN	
		2-2	8		
MS51957-46	5305000546671	1-18	38	PAFZZN	
		2-19	36		
MS51958-61	5305000593657	1-32	38	PAFZZN	
MS51958-63	5305000593659	1-33	2	PAFZZN	
		2-5	8		
MS51958-65	5305000593661	2-25	24	PAFZZN	
MS51958-68	5305000593664	1-26	32	PAFZZN	
MVEZKLEKNS-3/4		1-21	1	PAFZZN	
X21X7,16		2-17	1		
P4006-1420	5310003350047	1-45	14	PAFZZN	
ROTLOCK1	5325005083688	1-30	6	PAFZZN	
		2-4	2		
X-1181 3/4		1-28	119FT	XBFZZ-	
		2-27	80FT		
020188	4140010207606	1-36	2	PAFZZN	
028021	4140001330989	2-30	4	PAFZZN	
1/4-20X3/4		1-45	14	PAFZZN	
1512-00023-10		1-7	44FT	XBFZZ-	
		2-13	33FT		
1518-12025-10		1-8	9FT	XBFZZ-	
19-10-081-10		1-19	2	PAFZZN	
		2-15	1		
2W050-8FT		1-35	1	XBFZZ-	
2W050-4FT		1-34	1	XBFZZ-	
3032-50620-32		1-23	1	PAFZZN	
		2-18	2		
3032-51515-32		1-17	1	PAFZZN	
3510-00042-32		1-10	1	PAFZZN	
3510-00046-32		2-1	1	PAFZZN	
420056	6150010077129	2-29	4	PAFZZN	
476323	5840010072685	1-38	2	PAFZZN	

NUMERICAL INDEX

Part Number	Stock Number	Figure & Index Number	Qty Per Art	Source Code	Repair Code
5.1- 081800-00	5310000523632	1-11	26	PAFZZN	
511-101800-50	5310010123595	2-2	8	PAFZZN	
623040-89		1-16	16	PAFZZN	
		2-8	28	PAFZZN	
		2-3	2	PAFZZN	

DEPARTMENT OF THE ARMY
US ARMY AS PUBLICATIONS CENTER
1425 WOODRICK ROAD
ST. LOUIS, MISSOURI 63114
OFFICIAL BUSINESS
PENALTY FOR PRIVATE USE \$300

POSTAGE AND FEES PAID
DEPARTMENT OF THE ARMY
GPO 214



END

04-10-83

DATE



